

TOUCH DIAMOND
Quick Start Guide

Please Read Before Proceeding

THE BATTERY IS NOT CHARGED WHEN YOU TAKE IT OUT OF THE BOX.
DO NOT REMOVE THE BATTERY PACK WHEN THE DEVICE IS CHARGING.
YOUR WARRANTY IS INVALIDATED IF YOU OPEN OR TAMPER WITH THE DEVICE'S OUTER CASING.

PRIVACY RESTRICTIONS

Some countries require full disclosure of recorded telephone conversations, and stipulate that you must inform the person with whom you are speaking that the conversation is being recorded. Always obey the relevant laws and regulations of your country when using the recording feature of your PDA Phone.

Disclaimers

THE WEATHER INFORMATION, DATA AND DOCUMENTATION ARE PROVIDED "AS IS" AND WITHOUT WARRANTY OR TECHNICAL SUPPORT OF ANY KIND FROM HTC. TO THE MAXIMUM EXTENT PERMITTED BY APPLICABLE LAW, HTC AND ITS AFFILIATES expressly disclaim any and all representations and warranties, express or implied, arising by law or otherwise, regarding the Weather Information, Data, Documentation, or any other Products and services, including without limitation any express or implied warranty of merchantability, express or implied warranty of fitness for a particular purpose, non-infringement, quality, accuracy, completeness, effectiveness, reliability, usefulness, that the Weather Information, Data and/or Documentation will be error-free, or implied warranties arising from course of dealing or course of performance.

Without limiting the foregoing, it is further understood that HTC and its Providers are not responsible for Your use or misuse of the Weather Information, Data and/or Documentation or the results from such use. HTC and its Providers

make no express or implied warranties, guarantees or affirmations that weather information will occur or has occurred as the reports, forecasts, data, or information state, represent or depict and it shall have no responsibility or liability whatsoever to any person or entity, parties and non-parties alike, for any inconsistency, inaccuracy, or omission for weather or events predicted or depicted, reported, occurring or occurred. WITHOUT LIMITING THE GENERALITY OF THE FOREGOING, YOU ACKNOWLEDGE THAT THE WEATHER INFORMATION, DATA AND/OR DOCUMENTATION MAY INCLUDE INACCURACIES AND YOU WILL USE COMMON SENSE AND FOLLOW STANDARD SAFETY PRECAUTIONS IN CONNECTION WITH THE USE OF THE WEATHER INFORMATION, DATA OR DOCUMENTATION.

Limitation of Damages

TO THE MAXIMUM EXTENT PERMITTED BY APPLICABLE LAW, IN NO EVENT SHALL HTC OR ITS PROVIDERS BE LIABLE TO USER OR ANY THIRD PARTY FOR ANY INDIRECT, SPECIAL, CONSEQUENTIAL, INCIDENTAL OR PUNITIVE DAMAGES OF ANY KIND, IN CONTRACT OR TORT, INCLUDING, BUT NOT LIMITED TO, INJURY, LOSS OF REVENUE, LOSS OF GOODWILL, LOSS OF BUSINESS OPPORTUNITY, LOSS OF DATA, AND/OR LOSS OF PROFITS ARISING OUT OF, OR RELATED TO, IN ANY MANNER, OR THE DELIVERY, PERFORMANCE OR NONPERFORMANCE OF OBLIGATIONS, OR USE OF THE WEATHER INFORMATION, DATA OR DOCUMENTATION HEREUNDER REGARDLESS OF THE FORESEEABILITY THEREOF.

Contents

1. Welcome to the Touch Diamond Quick Start Guide.....	6
2. Inside the Box	6
3. Getting to Know the Touch Phone.....	7
4. Installing the SIM Card and Battery	8
5. Charging the Battery.....	9
6. Starting Up.....	10
7. The Home Screen	12
8. Single Hand Operation.....	13
9. Make Your First Call.....	14
10. Entering Information	15
11. Add Contacts to Your Device	16
12. Send a Text Message.....	17
13. Send an MMS Message	17
14. Set Up Wi-Fi.....	18
15. Set Up an Internet E-mail Account	19
16. Mobile Internet.....	21
17. Changing Phone Settings.....	24
18. Bluetooth	27

19. Keeping Track of Appointments.....	29
20. Keeping Track of Things to Do.....	30
21. Taking Photos and Shooting Videos	31
22. Viewing Photo and Videos.....	33
23. Synchronizing Your Device with Your PC.....	35
24. Copying Files to Your Device.....	37
25. Synchronizing Music Files	38
26. Listening to Music on Your Device.....	39
27. Resetting Your Device	40

1. Welcome to the Touch Diamond Quick Start Guide

Congratulations on your purchase of the Touch Diamond device. This **Quick Start Guide** will help you get started with your Windows Mobile® 6.1 Professional powered Touch Phone. We've arranged this Quick Start Guide in a way that it starts from when you open the box and then it walks you through the features we feel that you want to know or use right away when you turn on your device for the first time.

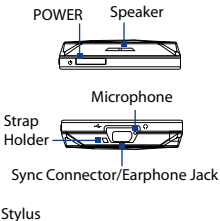
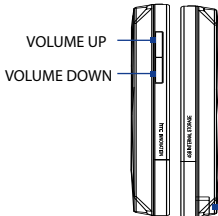
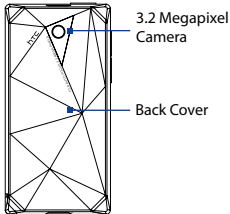
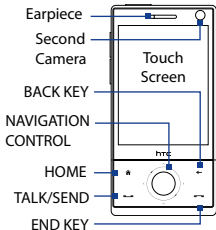
For a more complete guide in using your device, please refer to the **User Manual PDF** that we have included in the **Applications Disc** that came with the device. The Applications Disc also includes some programs that you can install on your device.

2. Inside the Box

You should find the following items inside the box.

- The Touch Diamond Phone
 - Battery
 - Extra Stylus
 - AC Adapter
 - Screen protector
 - Quick Start Guide and TouchFLO 3D Guide
 - Wired stereo headset
 - USB sync cable
 - Getting Started and Applications Discs
-

3. Getting to Know the Touch Phone

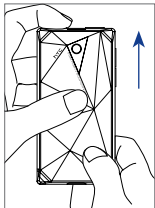


4. Installing the SIM Card and Battery

Make sure your device is turned off before installing the SIM card and battery. You also need to remove the back cover before you can install these components.

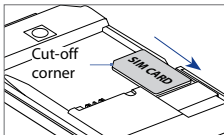
To remove the back cover

1. Hold the device with both hands and the front panel facing down.
2. Push the back cover up with your thumb until it disengages from the device and then slide it up to remove.



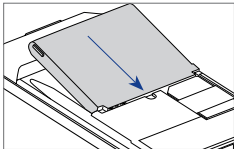
To install the SIM card

1. Locate the SIM card slot, then insert the SIM card with its gold contacts facing down and its cut-off corner facing out the card slot.
2. Slide the SIM card completely into the slot.



To install the battery

1. Align the battery's exposed copper contacts with the battery connectors inside the battery compartment.
2. Insert the contact's side of the battery first and then gently push the battery into place.
3. Replace the back cover.



5. Charging the Battery

New batteries are shipped partially charged. Before you start using your device, it is recommended that you install and charge the battery.

To charge the battery

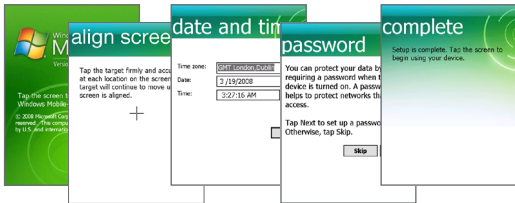
1. Connect the USB connector of the AC adapter to the sync connector on your device.
 2. Plug in the AC adapter to an electrical outlet to start charging the battery.
- The battery is fully charged after about **3 hours** of charging.

6. Starting Up

After installing your SIM card and battery and charging the battery, you can now power on and start using your device.

To turn on the power

1. Press and hold the POWER button for a few seconds.
2. A Quick Start Wizard guides you through the calibration of the screen and the setup of regional settings, date and time, and password. Follow the onscreen instructions to finish the Quick Start Wizard. After the Quick Start Wizard finishes, the device installs customization settings, then restarts.



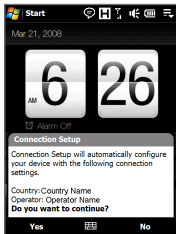
Note After the device restarts, you may be prompted to set up an e-mail account.

Configure data connection settings

After the device restarts, you will be asked if you want to automatically configure your device's data connections. By letting the device configure the data connection settings, you do not need to enter the settings for 3G/GPRS and WAP manually.

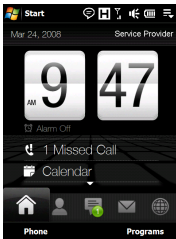
To automatically configure data connection settings

1. When you see the Connection Setup notification message at the bottom of the screen, tap **Yes**. Connection Setup then starts to configure your device's data connection settings.
2. After the Connection Setup completes the configuration, tap **Restart**.



Note For step 1, if your SIM card supports multiple network operator profiles, a message will appear with network profile choices. Select the profile you want to use and tap **OK**.

7. The Home Screen



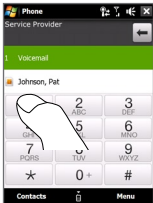
After the device restarts from configuring your data connections, you are taken to the Home screen. The default home screen of the device is the TouchFLO™ 3D Home screen which allows finger-touch access to the most important functions such as contacts, text messages, e-mail, Internet, and more. For more information about TouchFLO 3D, please refer to the TouchFLO 3D Guide and User Manual.

8. Single Hand Operation

One hand, one touch makes it easy and quick to accomplish tasks on your device.



Scroll through the tabs on the Home screen by touching and then dragging it.



Easily dial numbers with the large phone keypad buttons.





Finger-friendly keyboard makes one-handed typing fast. Press and hold the key to enter the character above the letter.



Quickly browse through your photos by flicking your finger up or down on the screen.

9. Make Your First Call

1. On the Home screen, tap **Phone**.
2. Tap the keys on the keypad to enter the phone number.

Tip If you tapped a wrong number, tap  to erase each subsequent digit of a number. To erase the entire number, tap and hold .

3. Press the **TALK/SEND** button to place the call.

Tip When in a call, use the **VOLUME UP/DOWN** buttons on the side of the device to adjust the phone volume.



You can also make a video call using your device if both you and the party you want to call are using a 3G-enabled SIM card and are inside a 3G coverage area.

To make a video call, dial the number of the person you want to start a video call with and then tap **Menu > Video Call**.

10. Entering Information

When you need to enter text, choose one of the available onscreen input methods. Here are some examples of onscreen input methods.

Tap to choose another onscreen input method.



Full QWERTY



Compact QWERTY



Phone Keypad

To enter characters, simply tap on the keys on the keyboard. Depending on the keyboard layout selected, you may need to tap the same key more than once to get to the character that you want to enter.

Tip When using T9 mode, tap SPACE to enter the first word in the predicted word list.

For information about the available onscreen input methods and how to use them, see Chapter 4 of the User Manual.

11. Add Contacts to Your Device

Save the contact information of the people you stay in touch with on your device.

To add a contact to your device

1. On the Home screen, slide to the **People** tab and then tap **All People**.
2. Tap **New > Outlook Contact**.
3. Enter the contact information and then tap **OK**.


To copy SIM card contacts to your device

Copying the contacts on your SIM card to the device will result in duplicated contacts in the Contacts list.

1. On the Home screen, tap **Start > Programs > SIM Manager**.
 2. In SIM Manager, tap **Menu > Select All**.
 3. Tap **Menu > Save to Contacts**.
-

12. Send a Text Message

Create and send SMS messages from your device.

1. On the Home screen, slide to the **Messages** tab and tap .
2. In **To**, enter the mobile phone number of the person you want to send the message to.
Tip You can also tap **To** to select a contact from your Contacts list.
3. Type your message and then tap **Send**.

13. Send an MMS Message

Create and send multimedia messages from your device.

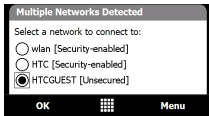
1. On the Home screen, slide to the **Messages** tab and tap **All Messages**.
2. Tap **Menu > New > MMS** and then tap **Custom**.
3. Enter the recipient's mobile number or e-mail address in **To** and enter the **Subject** line.
4. Fill in the MMS message components by tapping **Insert picture/video**, **Insert text here**, and **Insert audio**.
5. Tap **Send**.

14. Set Up Wi-Fi

Connect to a Wi-Fi hotspot to browse the Internet.

To connect to an open Wi-Fi network

1. On the Home screen, slide to the **Settings** tab.
2. On the Settings screen, tap **Communications > Wi-Fi** to turn on Wi-Fi.
3. The network names of the detected wireless networks are displayed on a pop-up message window. Tap the open (unsecured) wireless network, then tap **OK**.

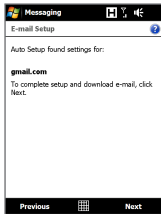


To learn how to connect to a secured network, please refer to Chapter 8 of the User Manual.

15. Set Up an Internet E-mail Account

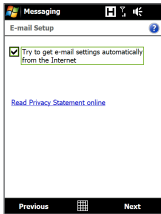
Set up your personal e-mail account such as Gmail or Yahoo! on your device.

1. On the Home screen, slide to the **Mail** tab and tap **New Account**.
2. Enter the **E-mail Address** and **Password** of your personal e-mail account and select the **Save password** checkbox. Tap **Next**.
3. After the device finds the settings for the e-mail account, tap **Next**.



Settings for the e-mail account are found in the device.

Settings for the e-mail account are NOT found in the device.





Note If the settings are not found in the device, the device needs to connect to the Internet to try to retrieve the settings.

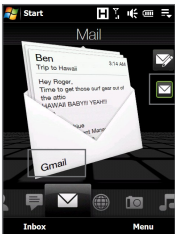
4. Enter **Your name** and the **Account display name** and then tap **Next**.

Note The **Account display name** is the name you will see on the **Mail** tab on the Home screen.

5. Select how often you want the device to check for new messages on the server in **Automatic Send/Receive** and then tap **Finish**.
6. Choose whether or not to download messages from the e-mail account.

To send e-mail using the Internet e-mail account


1. On the **Mail** tab of the Home screen, tap the icon () of the Internet e-mail account you have just set up.
2. Tap .
3. Enter the e-mail address of the person you want to e-mail in **To** and enter a **Subject** line
4. Type your e-mail and then tap **Send**.



16. Mobile Internet

Take advantage of hi-speed internet connection and improved browser features to experience desktop-like web surfing on your device.

To open Opera Mobile and browse the web

1. On the Home screen, slide to the **Internet** tab and then tap **Browser**.
2. On the Opera Mobile screen, tap the address bar.
3. Enter the URL address and tap .

To automatically rotate the screen

The screen orientation automatically adjusts to the way you hold the device.



Turn your device sideways to browse the web in landscape mode.

To zoom in on a web page

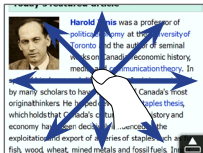
Double-tap the area of the screen you want to zoom in to.



Tip While zoomed in, double-tap the screen to zoom out.

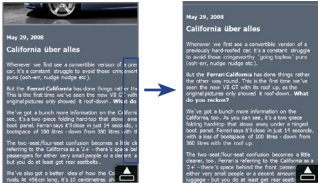
To pan the web page

Scroll the page by simply dragging your finger on the screen.



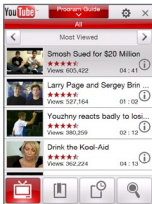
Automatic text wrapping

When you zoom in on a web page, the web page text automatically wraps to fit the screen.



Watch YouTube™ videos

Watch YouTube videos on your device. View, bookmark, view recent videos, or search for videos by simply touching the buttons at the bottom of the screen.



17. Changing Phone Settings

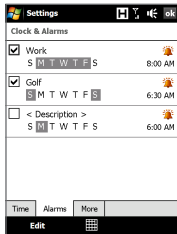
Customize your phone settings to suit your personal preferences.

To change the ringtone

1. On the Home screen, slide to the **Settings** tab and then tap **Sound**.
2. On the Sound screen, scroll down to **Ringtone** and tap it.
3. On the Ringtones screen, tap the ringtone you want to use and tap **Done**.

To set an alarm

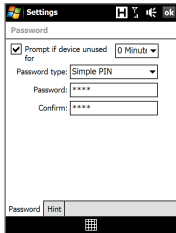
1. On the Home screen, slide to the **Settings** tab and then tap **All Settings**.
2. On the **Systems** tab, tap **Clock & Alarms**.
3. On the **Alarms** tab, select a checkbox and change the **Description**.
4. Tap the days you want the alarm to sound and then tap **OK**.



To enable device lock

Enabling device lock requires you to enter a password to unlock the device after it has been left idle for a set period of time.

1. On the Home screen, slide to the **Settings** tab and then tap **All Settings**.
2. On the **Personal** tab, tap **Lock**.
3. Select the **Prompt if device unused** check box and enter the time you want.
4. Select the **Password type**.
5. Enter and confirm the password and then tap **OK**.



To enable the SIM card PIN

Enabling the SIM card PIN requires you to enter a password first before you can use the phone features of the device.

1. On the Home screen, slide to the **Settings** tab and then tap **All Settings**.
2. On the **Personal** tab, tap **Phone > PIN** tab and then select the **Require PIN when phone is used** check box.
3. Follow the onscreen instructions to set the PIN number.

To change battery and backlight settings

Conserve battery power by adjusting the battery and backlight settings.

1. On the Home screen, slide to the **Settings** tab and then tap **All Settings**.
2. On the **System** tab, tap **Power**.
3. On the **Backlight** tab, set the brightness of the backlight by dragging **battery power** and **external power** sliders.
4. On the **Advanced** tab, set when you want the backlight and device to turn off when using battery and external power. Tap **OK**.

Note Turn off device only turns off the screen. The device is still "on."

18. Bluetooth

Pair your device with other Bluetooth-enabled devices or a Bluetooth headset if you have one.

To pair your device with a Bluetooth device

1. On the Home screen, slide to the **Settings** tab and then tap **Menu > Bluetooth Devices > Devices** tab.
 2. Tap **Add new device**. Your device displays the names of other Bluetooth devices within range.
 3. Tap the device name in the box, then tap **Next**.
 4. Specify a passcode to establish a secure connection. The passcode can be 1 up to 16 characters.
 5. Tap **Next**.
 6. Wait for the paired device to accept the partnership. The receiving party needs to enter the same passcode that you specified.
 7. The name of the paired device is then displayed. You may edit and enter a new name for that device.
 8. Select the check boxes of services that you want to use from the paired device, then tap **Finish**.
-

To pair your device with a Bluetooth headset

1. Make sure that both your device and the Bluetooth headset are turned on and within close range, and that the headset is visible. Refer to the manufacturer's documentation to find out how to set the headset in visible mode.
2. On the Home screen, slide to the **Settings** tab and then tap **Menu > Bluetooth Devices > Devices** tab > **Add new device**.
3. Tap the name of the Bluetooth headset, then tap **Next**. The device will automatically pair the device with the Bluetooth headset.

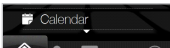
Windows Mobile will automatically try one of the preconfigured passcodes (0000, 1111, 8888, 1234) to pair the Bluetooth headset with the device. If this fails, you have to enter the passcode delivered with your headset manually. For more information about Bluetooth, refer to Chapter 9 of the User Manual.

19. Keeping Track of Appointments

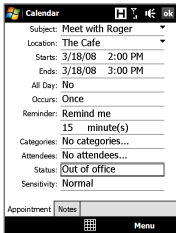
Use Calendar to help remind you of your upcoming appointments.

To enter an appointment into your device

1. On the Home screen **Home** tab, tap **Calendar**.



2. On the Calendar screen, tap **Menu > New Appointment**.
3. Use the onscreen keyboard to enter the appointment details.
4. After entering the appointment details, tap **OK**.



The appointment will show on the **Home** tab of the Home screen.

20. Keeping Track of Things to Do

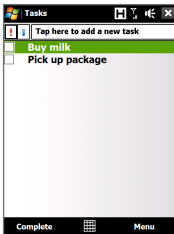
Use Tasks to help you remember things that you have to do.

To create a to-do list

1. Tap **Start > Programs > Tasks**.
2. On the Tasks screen, tap **Tap here to add a new task** and then enter the task name.
3. Tap the ENTER button on the onscreen keyboard.

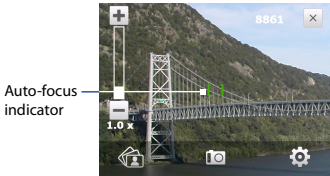
Tip You can also tap outside the field to enter the task.

Refer to Chapter 12 of the User Manual to learn more about the advanced features of Tasks.




21. Taking Photos and Shooting Videos

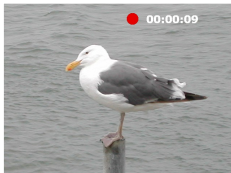
Use the 3.2 megapixel camera of the device to take photos and shoot videos.




To take a photo

1. On the Home screen, slide to the **Photos and Videos** tab and then tap the camera icon (). The screen orientation automatically switches to landscape mode when you open the Camera program.
2. Aim the device at the subject.
3. Press ENTER on the NAVIGATION CONTROL. This activates the auto-focus feature of the camera. When focus is set, the camera automatically takes the shot.

To shoot video



1. On the Home screen, slide to the **Photos and Videos** tab and then tap the video icon (). The screen orientation automatically switches to landscape mode when you open the Camera program.
2. Aim the device at the subject.
3. Press ENTER on the NAVIGATION CONTROL. This activates the auto-focus feature of the camera. When focus is set, the camera automatically starts capturing video. Press ENTER again to stop recording video.

To learn more about the other capture modes and functions of the Camera, refer to Chapter 11 of the User Manual.

22. Viewing Photo and Videos

Use Album to browse photos and play back video.

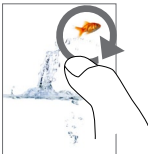
Note Album can only display files in the BMP, GIF, PNG, JPG, Animated GIF, 3GP, MP4, and WMV formats.

To view photos

1. On the Home screen, slide to the **Photos and Videos** tab and tap **Album**.
2. Tap an image to view it in full screen mode.
3. Use finger gestures to go to the next/previous image or to zoom in/out



Go to next or previous image.



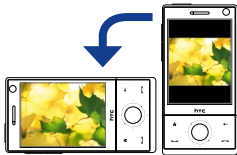
Slide your finger clockwise on an area to zoom in on that area.



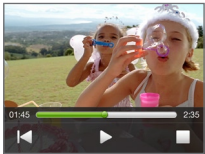
Slide your finger counter-clockwise to zoom out.

To rotate the image

While viewing images, you can automatically rotate the image by simply turning your device sideways.



To playback video



Tap the screen to show the playback controls.

1. On the Home screen, slide to the **Photos and Videos** tab and tap **Album**.
2. Tap the video you want to playback.

For more information about Album, refer to Chapter 11 of the User Manual.

23. Synchronizing Your Device with Your PC

Synchronize information and files between your PC and device.

Note You can refer to Chapter 5 of the User Manual to know which information and files you can synchronize.

Set up synchronization software on your PC

Depending on the Operating System of your PC, you will need either Microsoft ActiveSync® 4.5 (or later) or Windows Mobile® Device Center to synchronize your device with your PC.

To synchronize your device with a Windows XP PC

1. Install ActiveSync 4.5 on your PC from the Getting Started Disc.
 2. Connect your device to your PC using the supplied USB cable. The Synchronization Setup Wizard automatically starts and guides you to create a synchronization partnership. Click **Next**.
 3. Clear the **Synchronize directly with a server running Microsoft Exchange** check box and click **Next**.
 4. Select the information types you want to synchronize and then click **Next**.
-

5. Select whether or not to allow wireless data connections on your device while it is connected to the PC. Click **Next**.
6. Click **Finish**.

To synchronize your device with a Windows Vista PC

1. Connect your device to your PC using the supplied USB cable. Windows Mobile Device Center will open. On the screen, click **Set up your device**.
2. Select the information you want to synchronize and click **Next**.
3. Enter the name for your device and then click **Set Up**.

For more information about synchronization, refer to Chapter 5 of the User Manual.

24. Copying Files to Your Device

Your device comes with a built-in 4GB internal storage that you can use to store files.

To copy files from the PC to the device's internal storage

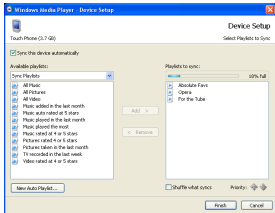
1. Connect your device to your PC using the supplied USB cable.
2. Click **File Management > Browse the contents of your device** in Windows Mobile Device Center or click **Explore** in ActiveSync on your PC. This opens Windows Explorer on your PC and displays the contents of your device.
3. Browse the folders on your PC, right-click the file you want to copy and then click **Copy**.
4. Go to **My Windows-Based Mobile Device > Internal Storage** and then right-click on the screen and click **Paste**.

When you want to copy media files such as music and videos to your device from your PC, it is recommended that you use Windows Media Player to copy the media files.

25. Synchronizing Music Files

Synchronize music files on your PC and the internal storage of the device so you can listen to them while on the go.

1. On your computer, open Windows Media® Player and then connect your device to your computer.
2. On the Device Setup dialog box, enter a name for your device and click **Finish**.
3. Click **Stop Sync** and then on the left panel of Windows Media® Player, right-click the name of your device and click **Set Up Sync**.
4. Select the music playlist(s) that you want to sync between your computer and the internal storage and then click **Add**.
5. Click **Finish**.

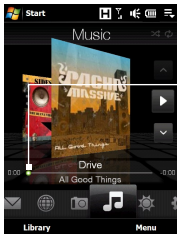
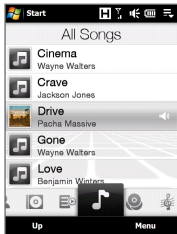


26. Listening to Music on Your Device

After synchronizing music files to your device, you can use the **Music** tab on the Home screen to play back music on your device.

To listen to music

1. On the Home screen, slide to the **Music** tab and then tap **Library**.
2. Slide to the **All Songs** tab and then tap the song you want to playback. The song starts to playback.



Touch and hold on this bar to display the Jog bar:

Drag right or left on the Jog bar to move forward or backward in the music.

For more information about the Music tab, refer to the TouchFLO 3D Guide and User Manual.

27. Resetting Your Device

If you experience some sluggishness with your device, you can perform a reset to shut down all programs and restart your device.

To perform a soft reset

1. Pull out the stylus.
2. Use the stylus to press the RESET button located at the opening of the stylus compartment. Your device restarts and displays the Home screen.



You can also perform a hard reset. After a hard reset, the device is restored to its default settings—the way it was when you first purchased it and turned it on. Only Windows Mobile® software and other pre-installed programs will remain.

To learn how to perform a hard reset, please refer to Chapter 13 of the User Manual.

Important Health Information and Safety Precautions

When using this product, the safety precautions below must be taken to avoid possible legal liabilities and damages.

Retain and follow all product safety and operating instructions. Observe all warnings in the operating instructions on the product.

To reduce the risk of bodily injury, electric shock, fire, and damage to the equipment, observe the following precautions.

ELECTRICAL SAFETY

This product is intended for use when supplied with power from the designated battery or power supply unit. Other usage may be dangerous and will invalidate any approval given to this product.

SAFETY PRECAUTIONS FOR PROPER GROUNDING INSTALLATION

CAUTION: Connecting to an improperly grounded equipment can result in an electric shock to your device.

This product equipped with a USB Cable for connecting with desktop or notebook computer. Be sure your computer is properly grounded (earthed) before connecting this product to the computer. The power supply cord of a desktop or notebook computer has an equipment-grounding conductor and a grounding plug. The plug must be plugged into an appropriate outlet which is properly installed and grounded in accordance with all local codes and ordinances.

SAFETY PRECAUTIONS FOR POWER SUPPLY UNIT

- **Use the correct external power source**

A product should be operated only from the type of power source indicated on the electrical ratings label. If you are not sure of the type of power source required, consult your authorized service provider or

local power company. For a product that operates from battery power or other sources, refer to the operating instructions that are included with the product.

- **Handle battery packs carefully**

This product contains a Li-ion battery. There is a risk of fire and burns if the battery pack is handled improperly. Do not attempt to open or service the battery pack. Do not disassemble, crush, puncture, short external contacts or circuits, dispose of in fire or water, or expose a battery pack to temperatures higher than 60°C (140°F).



WARNING: Danger of explosion if battery is incorrectly replaced. To reduce risk of fire or burns, do not disassemble, crush, puncture, short external contacts, expose to temperature above 60° C (140° F), or dispose of in fire or water. Replace only with specified batteries. Recycle or dispose of used batteries according to the local regulations or reference guide supplied with your product.



- **Take extra precautions**

- Keep the battery or device dry and away from water or any liquid as it may cause a short circuit.
 - Keep metal objects away so they don't come in contact with the battery or its connectors as it may lead to short circuit during operation.
 - Do not use a battery that appears damaged, deformed, or discolored, or the one that has any rust on its casing, overheats, or emits a foul odor.
-

-
- Always keep the battery out of the reach of babies and small children, to avoid swallowing of the battery. Consult the doctor immediately if the battery is swallowed.
 - If the battery leaks:
 - Do not allow the leaking fluid to come in contact with skin or clothing. If already in contact, flush the affected area immediately with clean water and seek medical advice.
 - Do not allow the leaking fluid to come in contact with eyes. If already in contact, DO NOT rub; rinse with clean water immediately and seek medical advice.
 - Take extra precautions to keep a leaking battery away from fire as there is a danger of ignition or explosion.

SAFETY PRECAUTIONS FOR DIRECT SUNLIGHT

Keep this product away from excessive moisture and extreme temperatures. Do not leave the product or its battery inside a vehicle or in places where the temperature may exceed 60°C (140°F), such as on a car dashboard, window sill, or behind a glass that is exposed to direct sunlight or strong ultraviolet light for extended periods of time. This may damage the product, overheat the battery, or pose a risk to the vehicle.

PREVENTION OF HEARING LOSS



CAUTION: Permanent hearing loss may occur if earphones or headphones are used at high volume for prolonged periods of time.

Note For France, Earphone (listed below) for this device have been tested to comply with the Sound Pressure Level requirement laid down in the applicable NF EN 50332-1:2000 and/or NF EN 50332-2:2003 standards as required by French Article L. 5232-1.

- Earphone, manufactured by HTC, Model HS S300.

SAFETY IN AIRCRAFT

Due to the possible interference caused by this product to an aircraft's navigation system and its communications network, using this device's phone function on board an airplane is against the law in most countries. If you want to use this device when on board an aircraft, remember to turn off your phone by switching to Airplane Mode.

ENVIRONMENT RESTRICTIONS

Do not use this product in gas stations, fuel depots, chemical plants or where blasting operations are in progress, or in potentially explosive atmospheres such as fuelling areas, fuel storehouses, below deck on boats, chemical plants, fuel or chemical transfer or storage facilities, and areas where the air contains chemicals or particles, such as grain, dust, or metal powders. Please be aware that sparks in such areas could cause an explosion or fire resulting in bodily injury or even death.

EXPLOSIVE ATMOSPHERES

When in any area with a potentially explosive atmosphere or where flammable materials exist, the product should be turned off and the user should obey all signs and instructions. Sparks in such areas could cause an explosion or fire resulting in bodily injury or even death. Users are advised not to use the equipment at refueling points such as service or gas stations, and are reminded of the need to observe restrictions on the use of radio equipment in fuel

depots, chemical plants, or where blasting operations are in progress. Areas with a potentially explosive atmosphere are often, but not always, clearly marked. These include fueling areas, below deck on boats, fuel or chemical transfer or storage facilities, and areas where the air contains chemicals or particles, such as grain, dust, or metal powders.

ROAD SAFETY

Vehicle drivers in motion are not permitted to use telephony services with handheld devices, except in the case of emergency. In some countries, using hands-free devices as an alternative is allowed.

SAFETY PRECAUTIONS FOR RF EXPOSURE

- Avoid using your phone near metal structures (for example, the steel frame of a building).
- Avoid using your phone near strong electromagnetic sources, such as microwave ovens, sound speakers, TV and radio.
- Use only original manufacturer-approved accessories, or accessories that do not contain any metal.
- Use of non-original manufacturer-approved accessories may violate your local RF exposure guidelines and should be avoided.

INTERFERENCE WITH MEDICAL EQUIPMENT FUNCTIONS

This product may cause medical equipment to malfunction. The use of this device is forbidden in most hospitals and medical clinics.

If you use any other personal medical device, consult the manufacturer of your device to determine if they are adequately shielded from external RF energy.

Your physician may be able to assist you in obtaining this information.

Turn your phone OFF in health care facilities when any regulations posted in these areas instruct you to do so. Hospitals or health care facilities may be using equipment that could be sensitive to external RF energy.

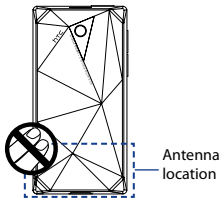
HEARING AIDS

Some digital wireless phones may interfere with some hearing aids. In the event of such interference, you may want to consult your service provider, or call the customer service line to discuss alternatives.

NONIONIZING RADIATION

Your device has an internal antenna. This product should be operated in its normal-use position to ensure the radiative performance and safety of the interference. As with other mobile radio transmitting equipment, users are advised that for satisfactory operation of the equipment and for the safety of personnel, it is recommended that no part of the human body be allowed to come too close to the antenna during operation of the equipment.

Use only the supplied integral antenna. Use of unauthorized or modified antennas may impair call quality and damage the phone, causing loss of performance and SAR levels exceeding the recommended limits as well as result in non-compliance with local regulatory requirements in your country. To assure optimal phone performance and ensure human exposure to RF energy is within the guidelines set forth in the relevant standards, always use your device only in its normal-use position. Contact with the antenna area may impair call quality and cause your device to operate at a higher power level than needed. Avoiding contact with the antenna area when the phone is IN USE optimizes the antenna performance and the battery life.



General Precautions

- **Avoid applying excessive pressure to the device**
Do not apply excessive pressure on the screen and the device to prevent damaging them and remove the device from your pants' pocket before sitting down. It is also recommended that you store the device in a protective case and only use the device stylus or your finger when interacting with the touch screen. Cracked display screens due to improper handling are not covered by the warranty.
 - **Device getting warm after prolonged use**
When using your device for prolonged periods of time, such as when you're talking on the phone, charging the battery or browsing the web, the device may become warm. In most cases, this condition is normal and therefore should not be interpreted as a problem with the device.
 - **Heed service markings**
Except as explained elsewhere in the Operating or Service
-

documentation, do not service any product yourself. Service needed on components inside the device should be done by an authorized service technician or provider.

- **Damage requiring service**

Unplug the product from the electrical outlet and refer servicing to an authorized service technician or provider under the following conditions:

- Liquid has been spilled or an object has fallen into the product.
- The product has been exposed to rain or water.
- The product has been dropped or damaged.
- There are noticeable signs of overheating.
- The product does not operate normally when you follow the operating instructions.

- **Avoid hot areas**

The product should be placed away from heat sources such as radiators, heat registers, stoves, or other products (including amplifiers) that produce heat.

- **Avoid wet areas**

Never use the product in a wet location.

- **Avoid using your device after a dramatic change in temperature**

When you move your device between environments with very different temperature and/or humidity ranges, condensation may form on or within the device. To avoid damaging the device, allow sufficient time for the moisture to evaporate before using the device.

NOTICE: When taking the device from low-temperature conditions into a warmer environment or from high-temperature conditions into a cooler environment, allow the device to acclimate to room temperature before turning on power.

- **Avoid pushing objects into product**

Never push objects of any kind into cabinet slots or other openings in the product. Slots and openings are provided for ventilation. These openings must not be blocked or covered.

- **Mounting accessories**

Do not use the product on an unstable table, cart, stand, tripod, or bracket. Any mounting of the product should follow the manufacturer's instructions, and should use a mounting accessory recommended by the manufacturer.

- **Avoid unstable mounting**

Do not place the product with an unstable base.

- **Use product with approved equipment**

This product should be used only with personal computers and options identified as suitable for use with your equipment.

- **Adjust the volume**

Turn down the volume before using headphones or other audio devices.

- **Cleaning**

Unplug the product from the wall outlet before cleaning. Do not use liquid cleaners or aerosol cleaners. Use a damp cloth for cleaning, but NEVER use water to clean the LCD screen.

- **For magnetic devices**



Please avoid putting any media that contains magnets, e.g. magnetic card, credit cards, bank cards, audio/video tape or magnetic memory devices, directly on the device or stylus without any distance.



It is highly recommended to put the media containing magnets in a security distance of at least 5 cm. If you carry your wallet or billfold which contains magnetic cards next to the device or its stylus, information stored on these cards could be destroyed.

Please make sure that there is an adequate distance between the device or its stylus and other magnetic sensitive devices, e.g., a mechanical watch or measure instruments.

- **For pacemakers**



The functionality of pacemakers can be interfered by the device and its stylus. Always keep the device and its stylus in a fair distance to your pacemaker, which at least will be 5 cm.



In any case, please do not carry the device and/or its stylus in the front pockets of your shirt or coat.

For information about other medical active implants, please contact the producer or a doctor to ensure such active implants will not be interfered by magnetic field.

Regulatory Agency Identifications

For regulatory identification purposes, your product is assigned a model number of **DIAM100**.

To ensure continued reliable and safe operation of your device, use only the accessories listed below with your **DIAM100**.

The Battery Pack has been assigned a model number of **DIAM160**.

Note This product is intended for use with a certified Class 2 Limited Power Source, rated 5 Volts DC, maximum 1 Amp power supply unit.

Telecommunications & Internet Association (TIA) safety information

- **Pacemakers**

The Health Industry Manufacturers Association recommends that a minimum separation of six inches be maintained between a handheld wireless phone and a pacemaker to avoid potential interference with the pacemaker. These recommendations are consistent with the independent research by and recommendations of Wireless Technology Research.

Persons with pacemakers:

- Should ALWAYS keep the phone more than six inches from their pacemaker when the phone is turned ON.
 - Should not carry the phone in a breast pocket.
 - Should use the ear opposite the pacemaker to minimize the potential for interference. If you have any reason to suspect that interference is taking place, turn the phone OFF immediately.
-

- **Hearing Aids**

Some digital wireless phones may interfere with some hearing aids. In the event of such interference, you may want to consult your service provider, or call the customer service line to discuss alternatives.

- **Other Medical Devices**

If you use any other personal medical device, consult the manufacturer of your device to determine if they are adequately shielded from external RF energy. Your physician may be able to assist you in obtaining this information.

Turn the phone OFF in health care facilities when any regulations posted in these areas instruct you to do so. Hospitals or health care facilities may be using equipment that could be sensitive to external RF energy.

WEEE Notice

The Directive on Waste Electrical and Electronic Equipment (WEEE), which entered into force as European law on 13th February 2003, resulted in a major change in the treatment of electrical equipment at end-of-life.

The purpose of this Directive is, as a first priority, the prevention of WEEE, and in addition, to promote the reuse, recycling and other forms of recovery of such wastes so as to reduce disposal.



The WEEE logo (shown at the left) on the product or on its box indicates that this product must not be disposed of or dumped with your other household waste. You are liable to dispose of all your electronic or electrical waste equipment by relocating over to the specified collection point for recycling of such hazardous waste. Isolated collection and proper recovery of your electronic and electrical waste equipment at the time of disposal will allow us to help conserving natural resources. Moreover, proper recycling of the electronic and electrical waste equipment will ensure safety of human health and environment. For more information about electronic and electrical waste equipment disposal, recovery, and collection points, please contact your local city center, household waste disposal service, shop from where you purchased the equipment, or manufacturer of the equipment.

RoHS Compliance

This product is in compliance with Directive 2002/95/EC of the European Parliament and of the Council of 27 January 2003, on the restriction of the use of certain hazardous substances in electrical and electronic equipment (RoHS) and its amendments.
